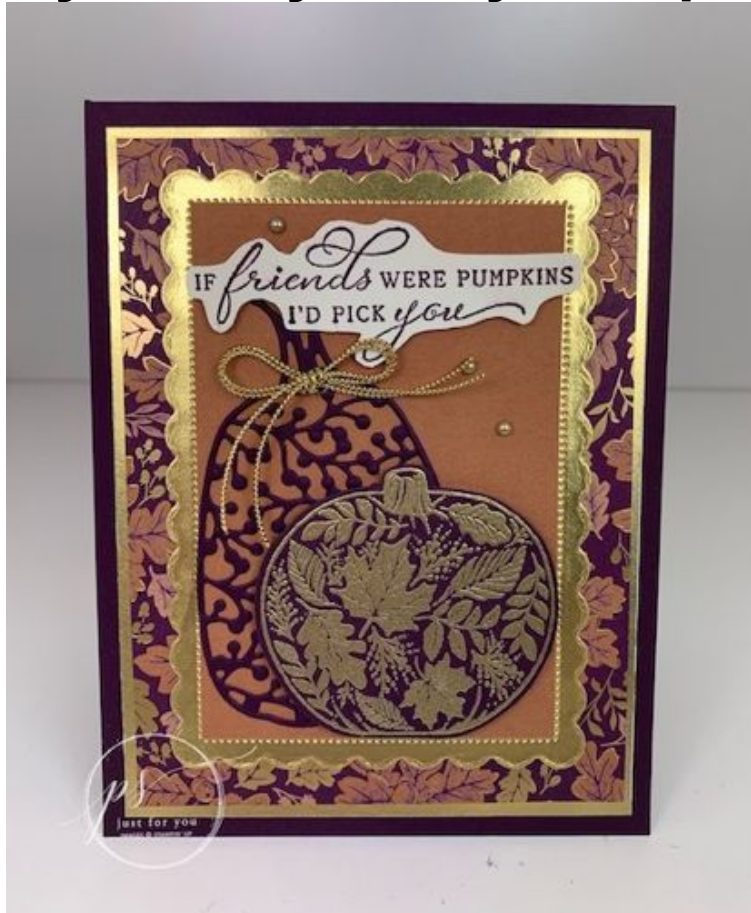


Blackberry Beauty Pretty Pumpkins Card



All images © 1990-2021 Stampin' Up!®

Supplies:

- **Stamp Sets** – Pretty Pumpkins Bundle (156478)
- **Paper** – Blackberry Bliss (133675), Cinnamon Cider (153078), Very Vanilla (101650), Gold Foil Sheets (132622), Blackberry Beauty Specialty Designer Series Paper (156458),
- **Stamp Pads** – Blackberry Bliss (147092), Versamark (102283)
- **Misc.** – Simply Elegant Trim (155766), Metallic Pearls (146282), Metallics Stampin' Emboss Powders (155555), Scalloped Contours Dies (155560), Heat Tool (129053), Adhesive Sheets (152334), Stampin' Dimensionals (104430); Stampin' Seal Adhesive (152813); Stampin' Cut & Emboss Machine (149653), Mini Glue Dots (103683)

Measurements:

- Blackberry Bliss card stock: 4 ¼" X 11" score at 5 ½"
- Gold Foil Sheet: 3 7/8" X 5 1/8"
- Blackberry Beauty Specialty Designer Series Paper: 3 ¾" X 5", ¾" X 4"
- Cinnamon Cider card stock: 2 5/8" X 4"
- Blackberry Bliss card stock: 4 ¼" X 5 ½"
- Very Vanilla card stock: 4" X 5 ¼", 1 ½" X 4"

Instructions:

1. Using the 3 ¼" X 4 ¼" Scalloped Contour Die; die cut out the center of the Gold Foil Sheet. Attach the rectangle layer to your card front.
2. Attach the Blackberry Beauty Designer Paper to your card front.

3. Attach the Cinnamon Cider card stock to the Gold Foil Scalloped die-cut; mount onto card front.
4. On the Blackberry Bliss card stock stamp the pumpkin using VersaMark ink and heat emboss with Gold embossing powder. Die cut out with the coordinating die.
5. Attach a piece of Adhesive sheet behind the remaining portion of the Blackberry Bliss card stock and die cut out the intricate pumpkin.
6. Attach the adhesive backed pumpkin first and then the embossed pumpkin using dimensionals.
7. Tie a double bow out of the Gold trim (approximately 16") and attach to your card front as shown using a glue dot.
8. On the Very Vanilla piece stamp your sentiment using Blackberry Bliss ink and hand cut out; attach as shown using dimensionals.
9. Attach the Gold Metallic Pearls as shown.
10. On the Very Vanilla card stock 4" X 5 ¼" attach a strip of the Blackberry Beauty Designer Paper across the bottom and attach to the inside of your card.